


*Geographic Institute of Burkina*




**Integrated Geospatial Information Framework – IGIF**

**Implementation experience from Burkina Faso**



Mamadou KABRE  
BURKINA FASO

1

## BURKINA FASO



- Landlocked country in West Africa.
- Six bordering countries: **Mali** to the North, **Niger** to the East, **Benin** to the Southeast, **Togo** and **Ghana** to the South, and **Ivory Coast** to the Southwest.

2

## BURKINA FASO

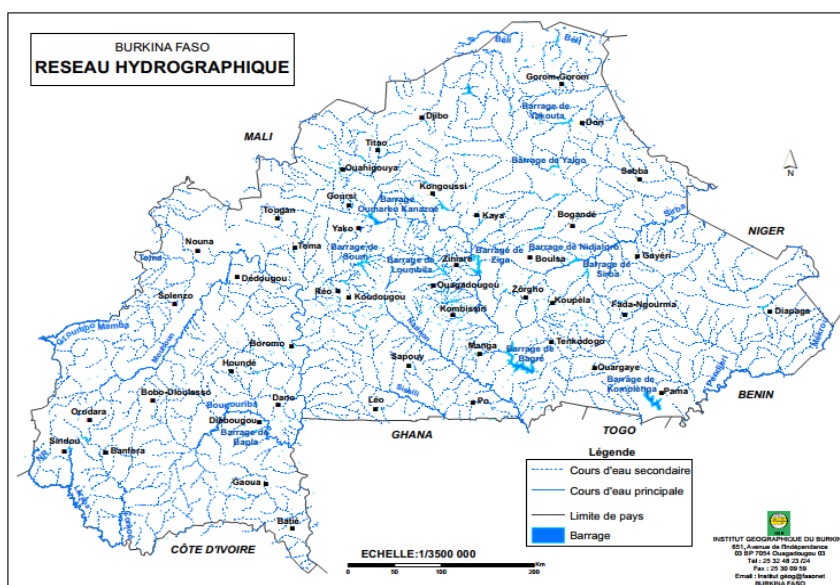


- Landlocked country in West Africa.
- Six bordering countries: **Mali** to the North, **Niger** to the East, **Benin** to the Southeast, **Togo** and **Ghana** to the South, and **Ivory Coast** to the Southwest.



3

## BURKINA FASO



4

## Why does Burkina Faso needs to implement the IGIF

- **Information Products and Services to meet national needs in relation to**
  1. Strategic Driver : UN 2030 Agenda
  2. Strategic Driver: AU 2063 agenda
  3. Strategic Driver : National Economic and Social Development Plan of Burkina Faso (PNDES)



5

## Why does Burkina Faso needs to implement the IGIF



### Including :

- (1) an Integrated Geospatial and Statistical data management framework ;
- (2) online Geospatial Information Management tools and products for national and international users, provided by the "Institut Géographique du Burkina – IGB";



6

## What is being done

- Burkina Faso selected as one of the developing countries benefiting from the UN Development Account Project;
- Process started in November 2018 with the guidance from two international consultants remotely



7

## What is being done

- A project formulation team was set up
- The team followed the Development Account Project's formulation process




Name	Position in the team	Office and position
Dr Ferdinand Bako	Team Leader	IGB, Director of Territorial Mapping Directorate
Mr. Halidou Nagabila	Member	IGB, Director General
Mr. Oumar Sanon	Member	IGB, Director of Research and Customer Services Directorate
Mr. Mamadou Kabré	Member	IGB, Chief of Cartographic Production and Customer Services Division
Mr. Thierry Tapsoba	Member	IGB, Chief of Quality Control Division
Mr André Bassolé	Member	CERPINEDD, Director General



8

## What is being done




- The project formulation team issued a draft project formulation road map

9

## What is being done

Component One: Project Execution Plan		
Activity	Date	Addendum
<b>1. Project Initiation Meeting</b>	Nov 2018	A
<b>2. Pre-needs Assessment Information Sharing</b>	Dec 2018	
<b>3. Project Scoping and Schedule</b>	Feb 2019	B



10

What is being done		
Component Two: Needs Assessment and Gap Analysis		
Activity	Date	Addendum
4. Current and Desired Performance	March 2019	C
5. Baseline Survey	March 2019	D
6. Environmental Scanning	April 2019	E
7. Stakeholder Identification and Analysis	April 2019	F
8. Stakeholder Engagement Workshop	May 2019	G
9. Strategic Alignment (and Benefits)	May 2019	H
10. Vision, Mission and Goals	June 2019	I
11. Gap Analysis Matrix	June 2019	J
12. Needs Assessment and Gap Analysis Report	July 2019	K

11

What is being done		
Component Three: Country Action Plan		
Activity	Date	Addendum
13. Review Country Action Plan (Template)	September 2019	L
14. Strategic Pathway Activities	October 2019	M
15. Populate Country Action Plan (with Activities)	Nov -December 2019	L
16. Implementation Schedule	January 2020	N
17. Budget Estimations	February 2020	O
18. Develop Success Indicators	March 2020	P
19. Finalise Country Action Plan	April 2020	L

12

### Issues and Challenges

- The main issues came from
  - Differences in the understanding of some aspects / concepts among the members of the project formulation team (further consultations, including explanations given by the international consultants allowed to reach consensus and proceed);
  - Lack of keenness from external resources persons to attend the meetings due to a lack of funding for the preparatory phase of the project;



13

### Issues and Challenges

- The main issues came from
  - Failure to timely mobilise the required financial resources to run the planned national stakeholder workshops (however a request for funding is promising in this regard);



14

## Progress Level

- **Component One** (project execution plan): completed
- **Component Two** (Needs assessment and Gap analysis) : completed, but some activities need to be carried out during national stakeholder workshops for validation
- **Component Three** (Country Action Plan: in progress
  - **Anticipation** : to minimise the delay in the development of the national action plan, some of the activities related to the third component are being carried out, while the funding of national stakeholder workshops is being mobilized



15

# THANK YOU



16